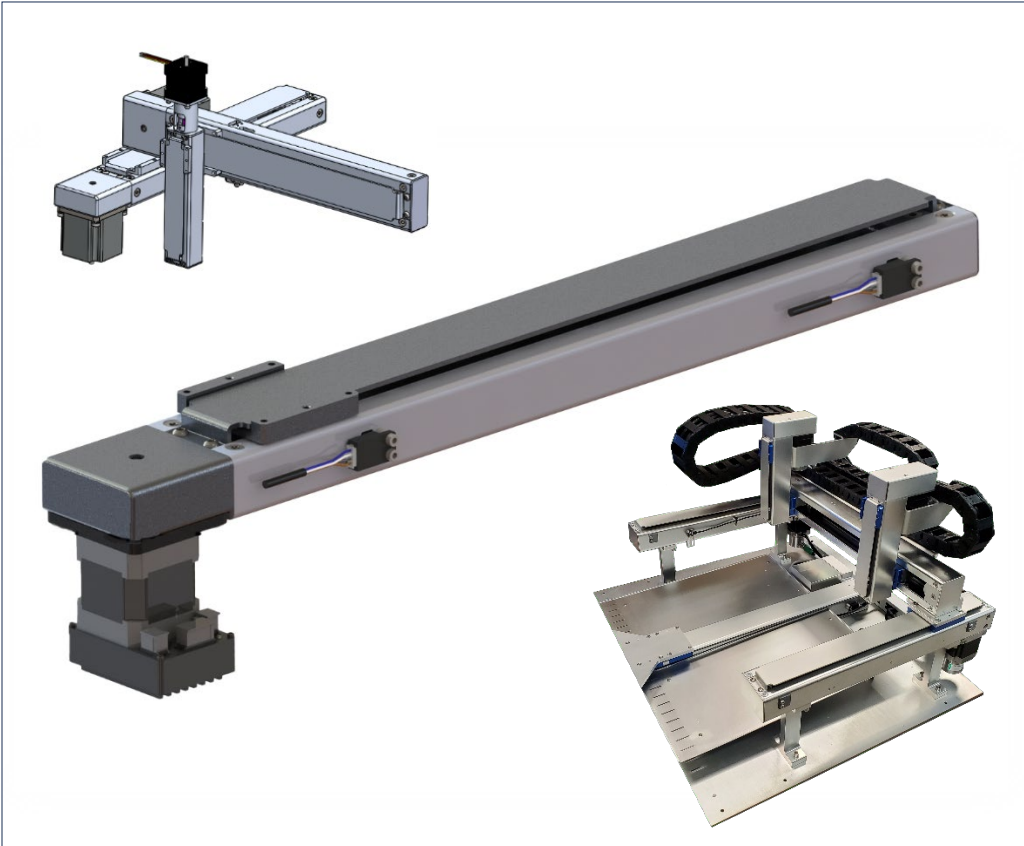


## SBA Single Belt Actuator



## LYNX SERIES

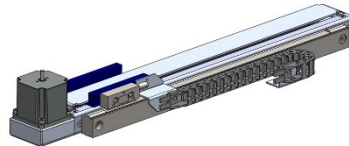
LINEAR ACTUATORS

### Feature/Benefit

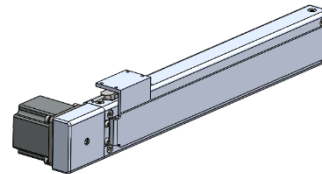
- Compact design for low profile requirements.
- Belt Driven design for speeds up to 2 m/s with accelerations of 2 g.
- Modular design provides simple method for creating multi-axis solutions.
- EASY-2-Mount Motor adapter system for mounting ModuSystems motor solutions or your own.
- Linear ball recirculation system provides smooth and quiet motion combined with adequate moment load capacities.
- Single Part number solution provides easy to select pre-engineered, pre-assembled Linear motion solution.
- SBA design allows for either vertical or horizontal orientation as well as motor up and motor down options.
- Let us select a ModuSystems Pre-engineered motor and control solution for your next SBA.

### SBA Single Belt Actuator Options

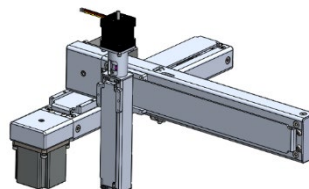
**SBA with Linear Encoder Option:** SBA is available with 0.1  $\mu$  Resolution magnetic encoder. Perfect for high-speed repeatable motion.



**SBA with Top Mounting Flange Option:** The top flange carriage option allows for SBA vertical orientation or for additional SBA axes of motion.

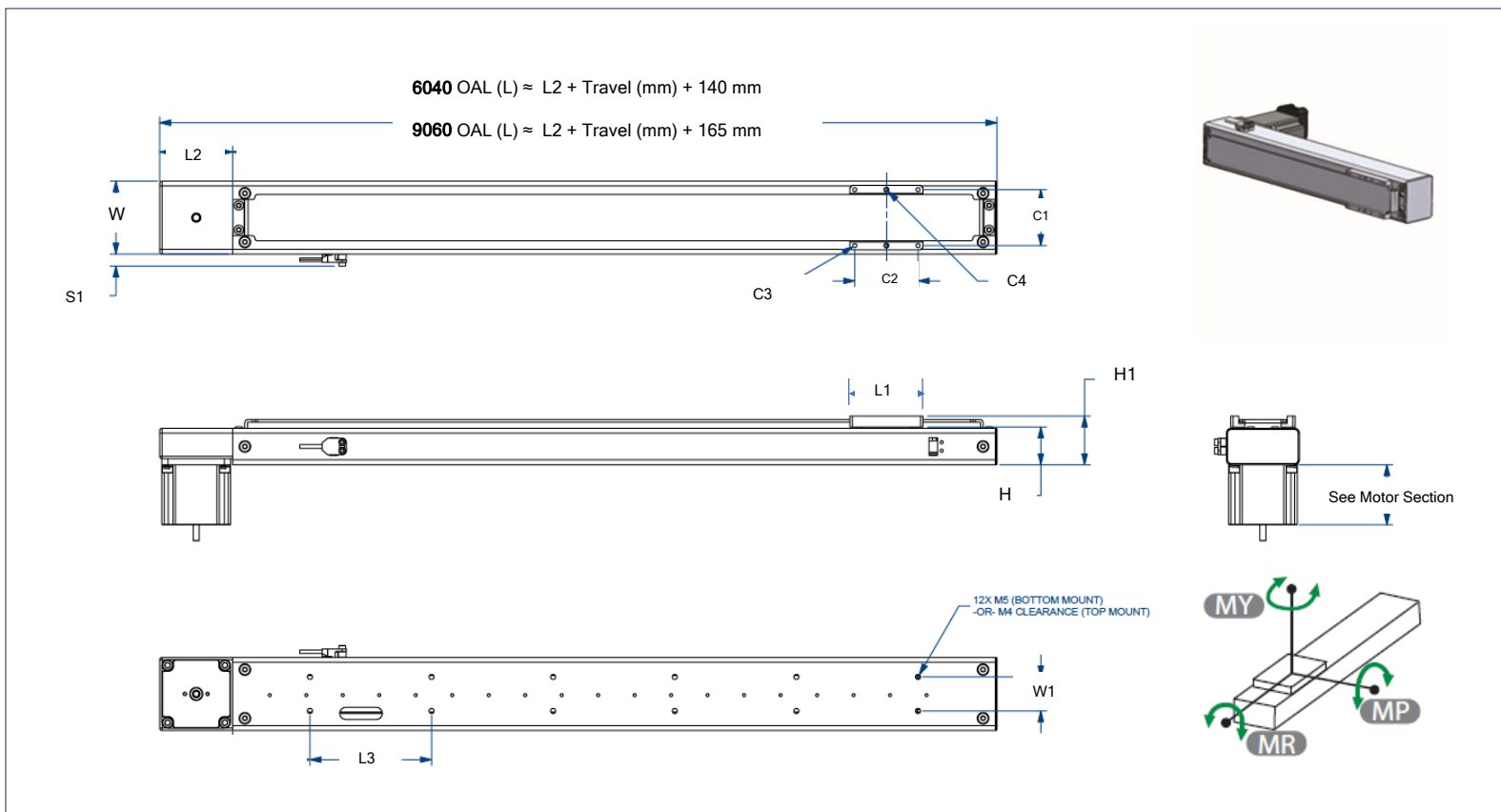


**SBA XYZ Option:** SBA unique modular design allows for easy to specify and assemble multi axis systems. Z-axis shown is LSA-Lead Screw actuator with Inline motor.



Stepper or Servo Controls  
Stepper or Servo Motors  
Integrated Motor Options

## SBA Single Belt Actuator



SBA	W	H	H1	L1	L2	L3	W1	C1	C2	C3	C4	S1	Mass kg	Dyn Load Capacity N	Dyn Moment Load Cap. Nm		
															MR	MP	MY
6040	60	30	40	58	60	100	28	50	50	M4	2 x 3mm pin hole	7.5	1.48+ (.0014 x travel mm)	75	31	14.9	14.9
9060	90	45	60	68	90	100	68	78	50	M4	2 x 3mm pin hole	7.5	3.20+ (.002 x travel mm)	150	171	161	161

Product Family	Product Size	Travel Length	Lead	Motor Orientation	Motor	Limits	Cable Track	Custom
<b>SBA</b>	<b>9060</b>	<b>1000</b>	<b>150</b>	<b>MU</b>	<b>N341AEPLG</b>	<b>L2</b>	<b>T1</b>	<b>001</b>
SBA-Single Belt Actuator	6040 9060	Min 0250 mm Maximum 2400 mm	100- 100 mm/rev (6040) 150- 150 mm/rev (9060)	MU – Motor Up MD – Motor Down	<a href="#">N231AEPLG</a> - (6040) BLADE Stepper <a href="#">SVM-NV23</a> - (6040) AXYS Servo <a href="#">N341AEPLG</a> - (9060) BLADE Stepper <a href="#">SVM-NV34</a> - (9060) AXYS Servo MNT - Customer Supplied Motor	L0 – No Limits L1 - 1 PNP, NC L2 - 2 PNP, NC L3 - 1 NPN, NO L4 - 2 NPN, NO	T0 – None T1 - Vert Std Size T2 - Vert Large Size T3 - Hor. Std Size T4 - Hor. Large Size	None - Standard 000- Custom