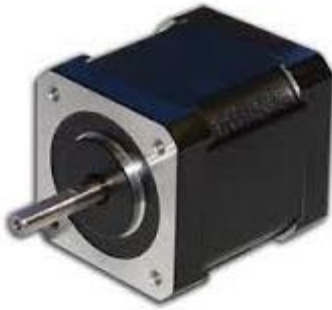




# Size 17 Stepper Motors

## 1.8° Size 17 High Torque Hybrid Motors



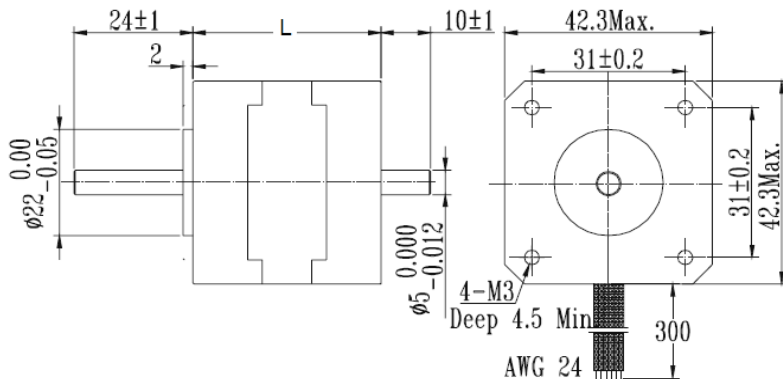
### General Specification for Hybrid Step Motors

Item	Specifications
Step Angle Accuracy	± 5% (full step, no load)
Resistance Accuracy	± 10%
Inductance Accuracy	± 20%
Temperature Rise	80°C Max. (rated current, 2 phase on)
Ambient Temperature	- 10°C ~ +50°C
Insulation Resistance	100 MΩ Min., 500 VDC
Dielectric Strength	500 VAC for one minute
Shaft Radial Play	0.06 Max. (450 g-load)
Shaft Axial Play	0.08 Max. (450 g-load)

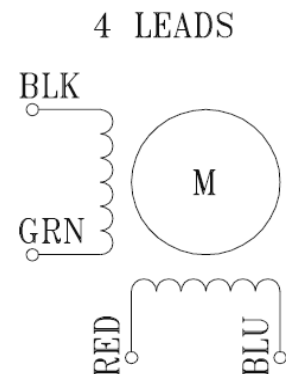
Motor P/N	Step Angle (deg)	Rated Current (A/phase)	Winding Resistance (ohm/phase)	Inductance (mh/phase)	Holding Torque (oz-in)	Motor Length (in)	Rotor Inertia (oz-in <sup>2</sup> )	Mass (lbs)
N17-1D	1.8	0.91	3.3	8	21.5	1	0.153	0.419
N1709-1D	0.9	0.91	3.3	8	21.5	1	0.153	0.419
N17-2D	1.8	1.33	2.1	2.5	30	1.3	0.191	0.485
N1709-2D	0.9	1.33	2.1	2.5	30	1.3	0.191	0.485
N17-3D	1.8	1.68	1.65	3.2	50	1.5	0.295	0.617
N1709-3D	0.9	1.68	1.65	3.2	50	1.5	0.295	0.617
N17-4D	1.8	1.68	1.65	2.5	62	1.85	0.372	0.772
N1709-4D	0.9	1.68	1.65	2.8	62	1.85	0.372	0.772

Stocked Item

### Dimensions:



### Wiring Diagram



Learn More at: [www.ModuSystems.com](http://www.ModuSystems.com)