



Size 23 Stepper Motors

1.8° Size 23 High Torque Hybrid Motor



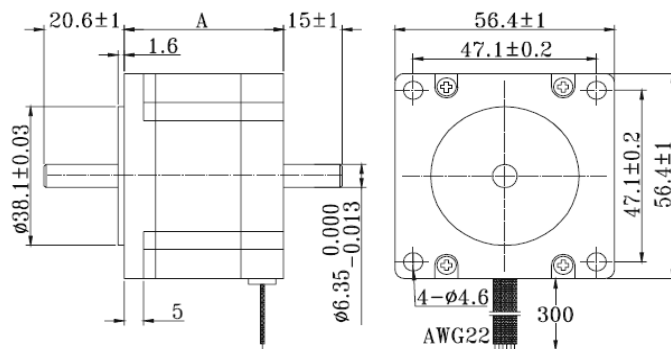
• General Specification for Hybrid Step Motors

Item	Specifications
Step Angle Accuracy	$\pm 5\%$ (full step, no load)
Resistance Accuracy	$\pm 10\%$
Inductance Accuracy	$\pm 20\%$
Temperature Rise	80°C Max. (rated current, 2 phase on)
Ambient Temperature	- 10°C ~ +50°C
Insulation Resistance	100 M Ω Min., 500 VDC
Dielectric Strength	500 VAC for one minute
Shaft Radial Play	0.06 Max. (450 g-load)
Shaft Axial Play	0.08 Max. (450 g-load)

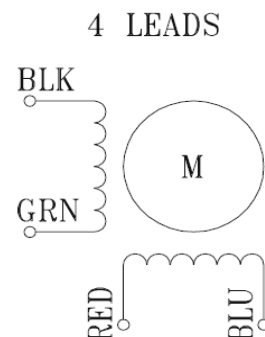
Motor P/N	Step Angle (deg)	Rated Current (A/phase)	Winding Resistance (ohm/phase)	Inductance (mh/phase)	Holding Torque (oz-in)	Motor Length (in)	Rotor Inertia (oz-in ²)	Mass (lbs)
N23-1D	1.8	2.8	0.7	1.4	75	1.6	0.656	0.992
N2309-1D	0.9	2.8	0.7	1.4	75	1.6	0.656	0.992
N23-2D	1.8	2.8	0.83	2.2	140	2	1.503	1.433
N2309-2D	0.9	2.8	0.83	2.2	140	2	1.503	1.433
N23-3D	1.8	2.8	0.9	2.5	175	2.2	1.64	1.543
N2309-3D	0.9	2.8	0.9	2.5	175	2.2	1.64	1.543
N23-4D	1.8	2.8	1.13	3.6	262	3	2.624	2.205
N2309-4D	0.9	2.8	1.13	3.6	262	3	2.624	2.205

Stocked Item

• Dimensions:



• Wiring Diagram



Learn More at: www.ModuSystems.com