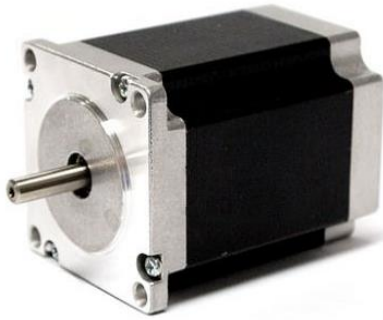




Size 24 Stepper Motors

1.8° Size 24 High Torque Hybrid Motors

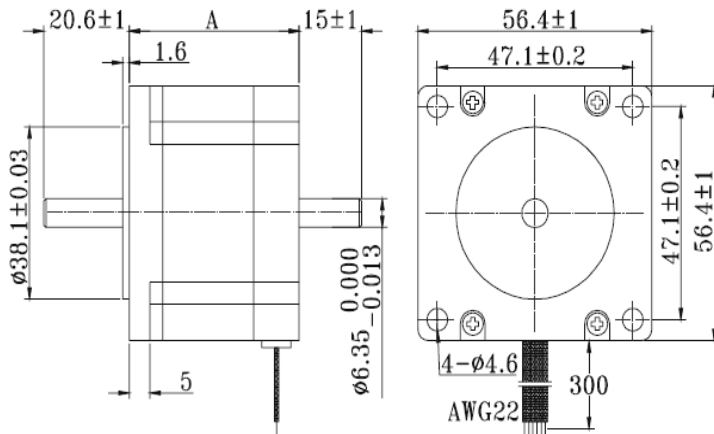


• General Specification for Hybrid Step Motors

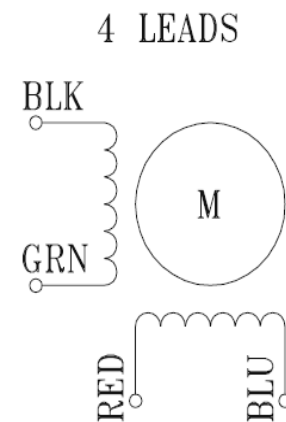
Item	Specifications
Step Angle Accuracy	± 5% (full step, no load)
Resistance Accuracy	± 10%
Inductance Accuracy	± 20%
Temperature Rise	80°C Max. (rated current, 2 phase on)
Ambient Temperature	- 10°C ~ +50°C
Insulation Resistance	100 MΩ Min., 500 VDC
Dielectric Strength	500 VAC for one minute
Shaft Radial Play	0.06 Max. (450 g-load)
Shaft Axial Play	0.08 Max. (450 g-load)

Motor P/N	Frame Size	Step Angle (deg)	Rated Current (A/phase)	Holding Torque (oz-in)	Motor Length (in)	Mass (lbs)
N24-5	NEMA 24	1.8	2.1	432	3.38	3.1

• Dimensions:



• Wiring Diagram



Learn More at: www.ModuSystems.com