



Size 34 Stepper Motors

1.8° Size 34 High Torque Hybrid Motors



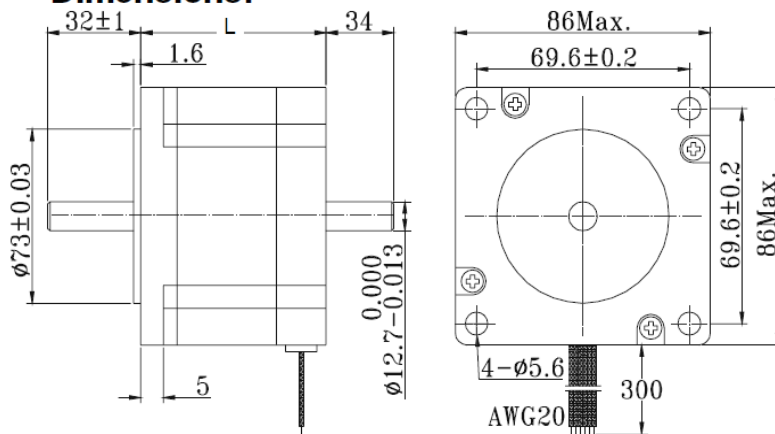
• General Specification for Hybrid Step Motors

Item	Specifications
Step Angle Accuracy	± 5% (full step, no load)
Resistance Accuracy	± 10%
Inductance Accuracy	± 20%
Temperature Rise	80°C Max. (rated current, 2 phase on)
Ambient Temperature	- 10°C ~ +50°C
Insulation Resistance	100 MΩ Min., 500 VDC
Dielectric Strength	500 VAC for one minute
Shaft Radial Play	0.06 Max. (450 g-load)
Shaft Axial Play	0.08 Max. (450 g-load)

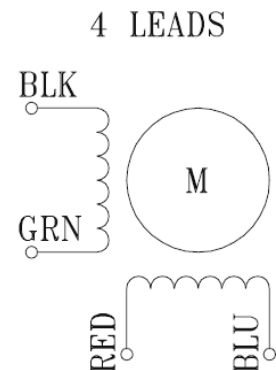
Motor P/N	Step Angle (deg)	Rated Current (A/phase)	Winding Resistance (ohm/phase)	Inductance (mh/phase)	Holding Torque (oz-in)	Motor Length (in)	Rotor Inertia (oz-in ²)	Mass (lbs)
N34-1D	1.8	4.2	0.57	3.1	397	2.36	5.467	3.748
N34-2D	1.8	4.2	0.8	13.6	634	3.07	7.654	5.291
N34-3D	1.8	4.2	1.04	12.2	1150	4.6	14.761	8.818
N34-4D	1.8	6	0.75	9.5	1685	6.14	21.868	12.125

Stocked Item

• Dimensions:



• Wiring Diagram



Learn More at: www.ModuSystems.com